

## PR305 Women's Poplin 3/4 Sleeve Blouse

### Description

A semi fitted blouse for women that offers a fashionable three-quarter length sleeve. The sleeve is finished off with a neat vented cuff and the bust and back area offers a flattering cut that gives the blouse its fitted appearance.

### Product Features:

- Soft collar styling
- Rounded bottom hem
- Feminine fit style with bust and back darts.
- Three quarter sleeves with vented cuff

### Available In:

6 (Black & White Only), 8, 10, 12, 14, 16, 18, 20, 22, 24, 26

### Certifications:

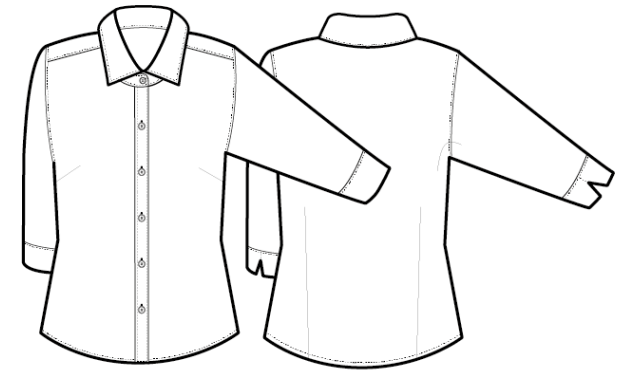


### Colours:

Colour	Pantone	C	M	Y	K
Black	Black c	0	0	0	100
Light Blue	2707c	20	6	0	0
Mid Blue	2135c	62	39	0	0
Red	201c	7	100	68	32
Royal	7686c	100	73	0	0
Silver	429c	21	11	9	23
White	White	0	0	0	0

### Fabric:

65% Polyester, 35% Cotton Poplin,  
105gsm.  
White: 115gsm.



### Suggested Decoration:

Screen Print, Transfer Print, Embroidery

### Country of Origin:

Bangladesh

### Commodity Code:

6206400000

### Features:



### Wash Care:



### Carton Information:

Sizes	Carton	Pack	SKU's	Carton Weight	Carton Dimensions
6-20	36	6	51	7.2kg	58cmx38cmx16cm
22-26	12	3	21	2.8kg	58cmx28cmx15cm

### Garment Sizes:

Size	6	8	10	12	14	16	18	20	22	24	26
Bust to fit"	31	33	35	37	39	41	43	45	47	49	51
Bust to fit cm	79	84	89	94	99	104	109	114	119	124	129
Bust actual cm	91	93	98	103	108	113	118	124	131	136	141
Call size	2XS	XS	S	M	L	XL	2XL	3XL	4XL	5XL	6XL
Back length cm	63	63	64	65	65	66	66	67	67	68	68